

## USING PuTTY TERMINAL APPLICATION WITH VAISALA INSTRUMENTS

PuTTY is a free terminal application that you can use to open a serial/USB connection or a telnet session (for transmitters with LAN or WLAN interface) to your Vaisala instrument.

This document provides basic instructions for opening connections using the PuTTY terminal application provided by Vaisala. Before starting to use the program, verify the connection type and settings that are available in your Vaisala instrument, and connect the instrument as instructed in its *User's Guide*.

For additional information on the configuration settings of the application, see the *PuTTY User Manual*. You can access the manual by clicking the **Help** button in the PuTTY application. Please note that PuTTY has many advanced settings that are not relevant for operation with Vaisala instruments.

If you have technical questions about using PuTTY with your Vaisala instrument, contact Vaisala technical support:

E-mail [helpdesk@vaisala.com](mailto:helpdesk@vaisala.com)  
Fax +358 9 8949 2790

### Useful Terminal Settings

If you have problems entering commands after opening a session, you may have to adjust some of the settings in the Terminal category. To access the configuration screen while a session is running, click the right mouse button over the session window, and select **Change Settings...** from the pop-up menu.

- Depending on the instrument, you may need to set **Local echo** to **Force on** to see what you are typing in the connection window.
- When you press Enter to input a command, PuTTY sends the carriage return (CR) character. If your instrument requires the line feed (LF) character after CR, you should check the checkbox for **Send line ends with line feeds**. For example, Vaisala Weather Transmitter WXT520 requires this.

|             |  |
|-------------|--|
| <b>NOTE</b> | If you have to change the terminal settings, it is a good idea to save the settings for later use. You can save and load sessions in the Session screen. |
|-------------|--|

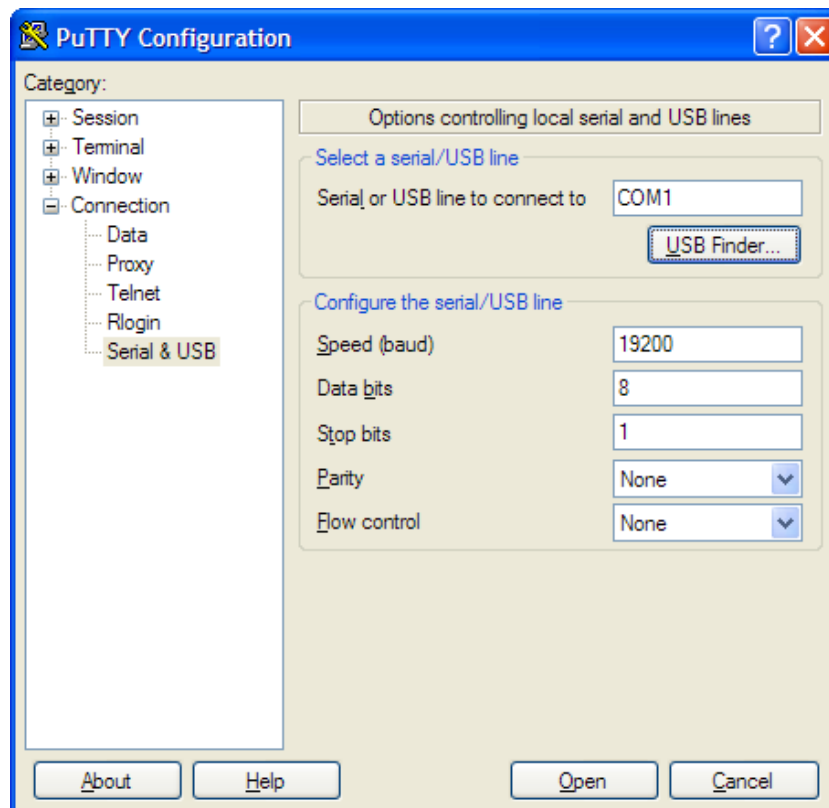
## Opening a Serial/USB Connection

1. Power up the instrument and start the PuTTY application.
2. Select the Serial & USB settings category, and check that the correct COM port is selected in the **Serial or USB line to connect to** field. Change the port if necessary.

If you are using a Vaisala USB cable, you can check the port that it uses by clicking the **USB Finder...** button. This opens the *Vaisala USB Instrument Finder* program that has been installed along with the USB drivers.

3. Check that the other serial/USB line settings are correct for your connection, and change if necessary. **Flow control** should be set to **None** unless you have a reason to change it.

The default settings (shown in Figure 1) are used by many Vaisala instruments.



**Figure 1** Opening a Serial Connection

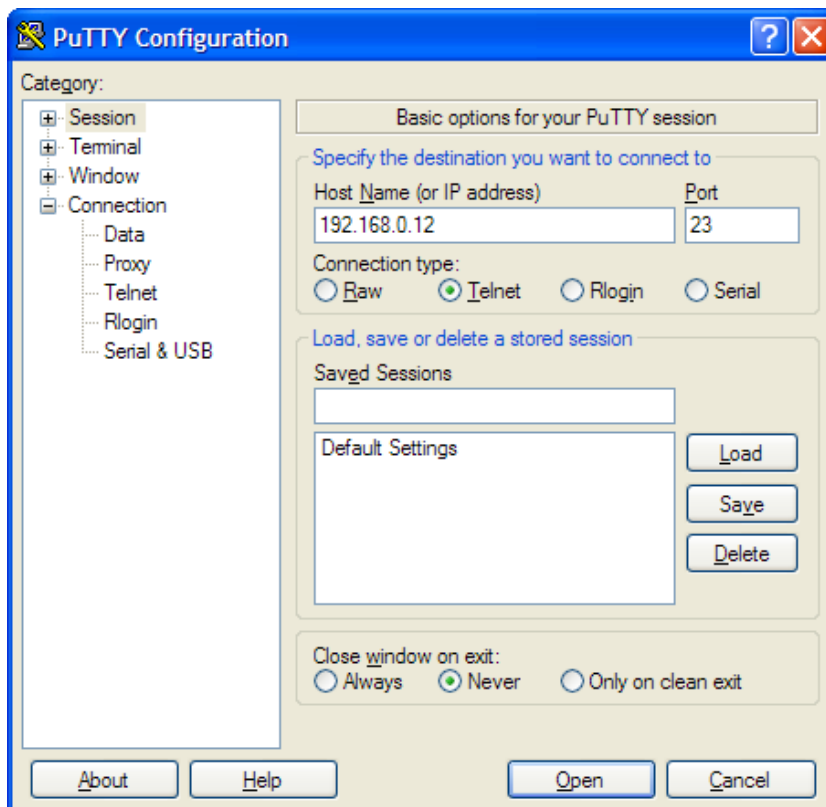
4. Click the **Open** button to open the connection window and start using the serial line.

If PuTTY is unable to open the serial port you selected, it will show you an error message instead. If this happens, restart PuTTY and check the settings.

## Opening a Telnet Session (LAN/WLAN)

**NOTE** The instructions below assume that the LAN/WLAN interface on the instrument is correctly configured and the network connection is already done. Refer to the User's Guide of your instrument.

1. Power up the instrument and start the PuTTY application. If your instrument acquires a network address using DHCP, wait for a minute for this to happen, then verify the address from the instrument.
2. In the Session window, select the **Telnet** connection type.
3. Enter the IP address of your transmitter in the **Host Name (or IP address)** field. If you do not know the port, the default port **23** is likely correct.



**Figure 2** Opening a Telnet Connection

4. Click the **Open** button to open the connection window and start using the telnet session.

If PuTTY is unable to connect the IP address you entered, it will show you an error message instead. If this happens, check the IP address and the connections, restart PuTTY, and try again.